



“ज्ञान, विज्ञान आणि सुसंस्कार यांसाठी शिक्षण प्रसार” – शिक्षणमहर्षी डॉ. बापूजी साळुंखे

Shri Swami Vivekanand Shikshan Sanstha, Kolhapur.

# VIVEKANAND COLLEGE, KOLHAPUR (Autonomous)

Affiliated to Shivaji University

NAAC Reaccredited “A” | College with Potential for excellence | ISO 9001 : 2015



## TOPIC NAME:

# NETWORK ARCHITECHTURE

Presented By,

**Megha S Patil.**

# NETWORK

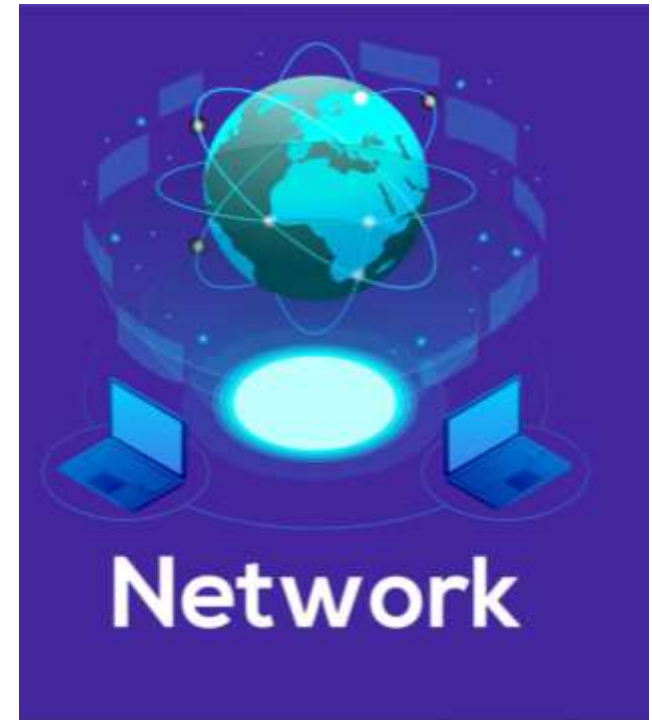
Network is a collection of :

- **Computers**
- **Servers**
- **Network devices**
- **Peripherals**

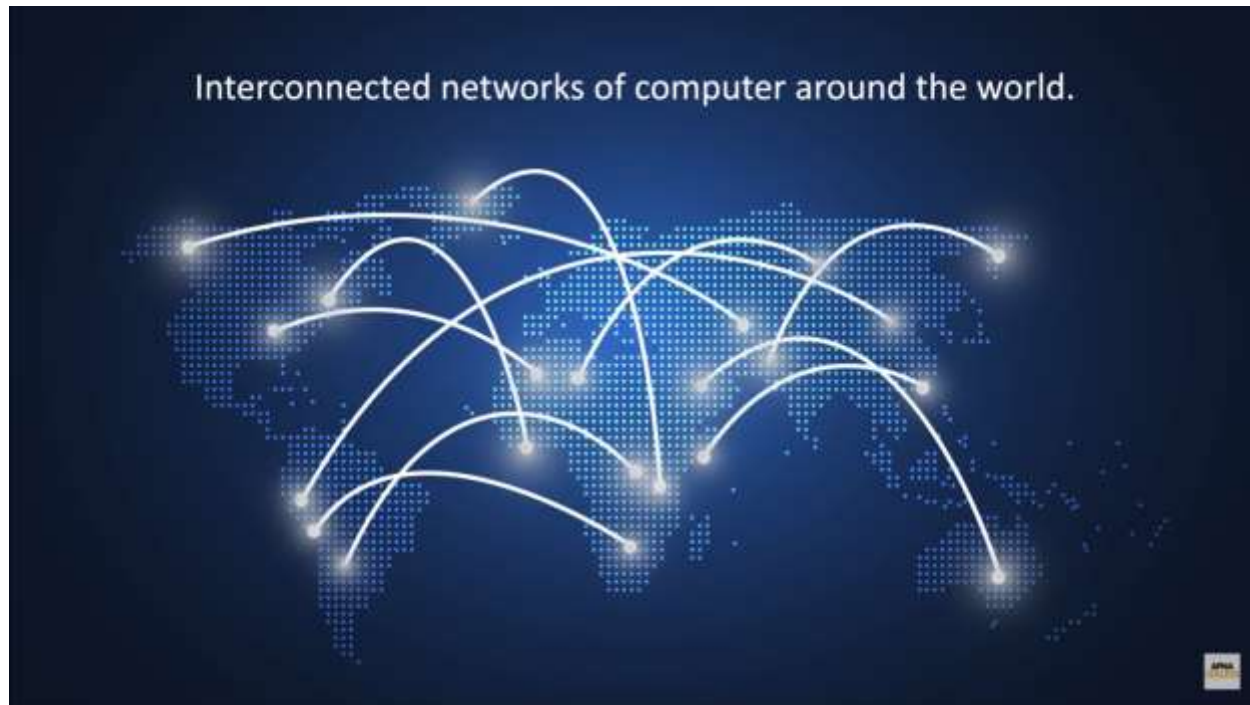
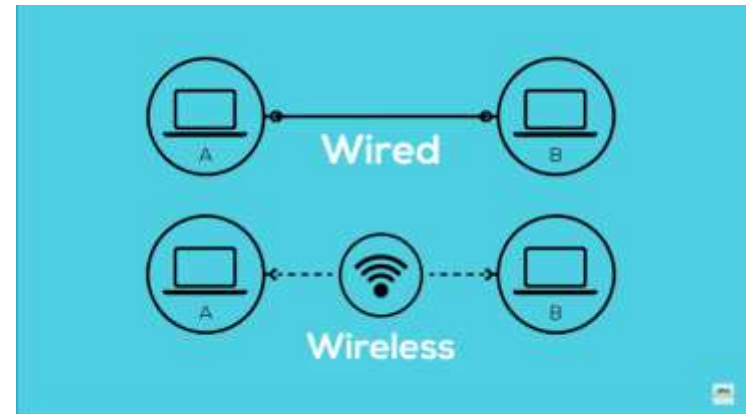
Internet :

• **Connected To Allow Data Sharing.**

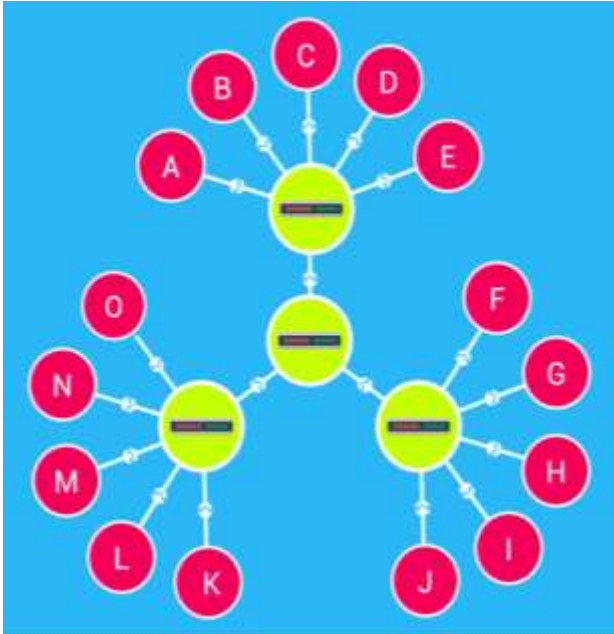
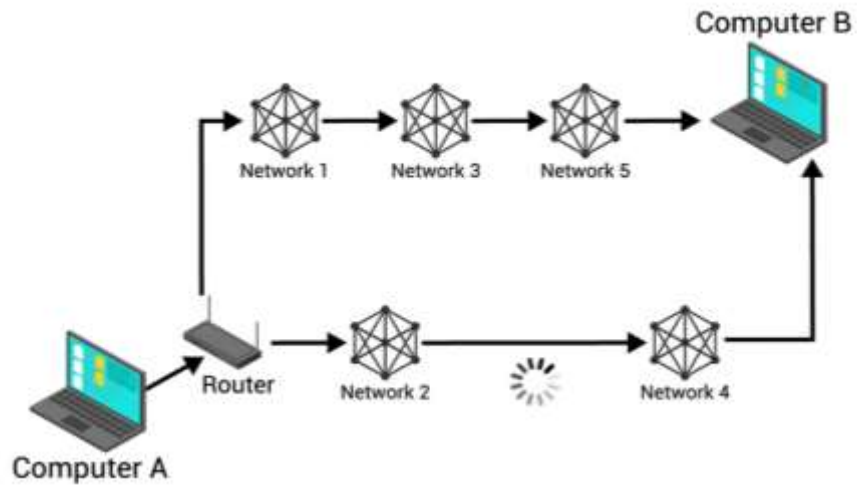
• **Connects Millions Of People All Over The World.**



# How Network Works?



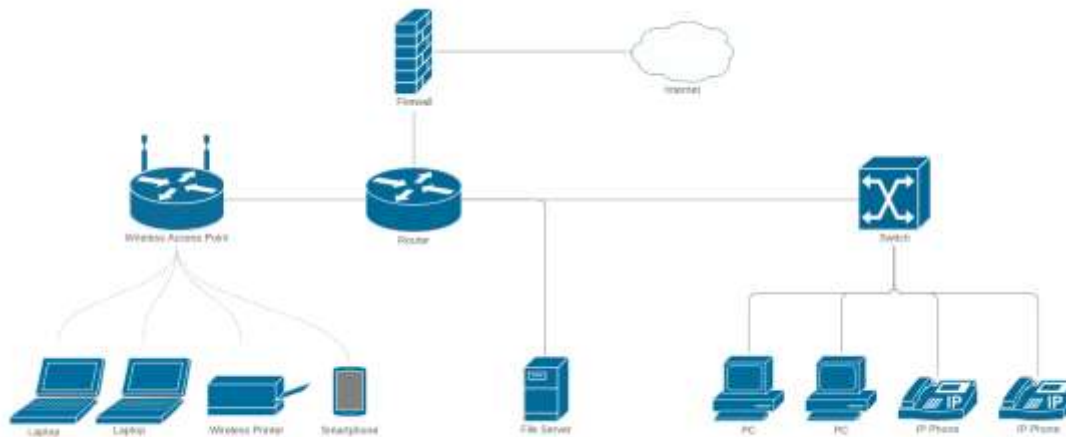
# How Network Works?



# NETWORK ARCHITECTURE

**The way network devices and services are structured to Serve the connectivity needs of client devices.**

- Peer To Peer Network Architecture
- Client Server Network Architecture.

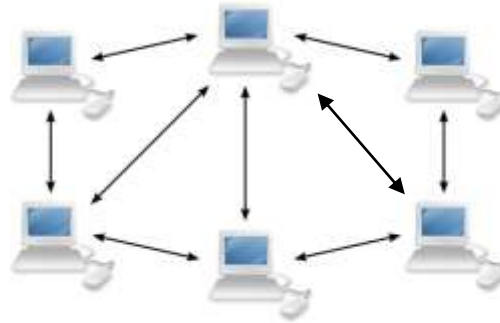


# PEER TO PEER NETWORK ARCHITECTURE

## Local examples

- **Local limited companies**
  - **Pvt ltd companies**
  - **Mahalaxmi chambers**
  - **Gujari market (jewellery market)**
  - **Oil associations.**
- 
- **They all are interconnected to each other.**
  - **They play same role to give justice to their work.**
  - **Each need to report their connectors.**

# PEER TO PEER NETWORK ARCHITECTURE



## Advantages

Does't require a network operating system.

doesn't require advanced knowledge to be useful

reduces the need to have technical staff.

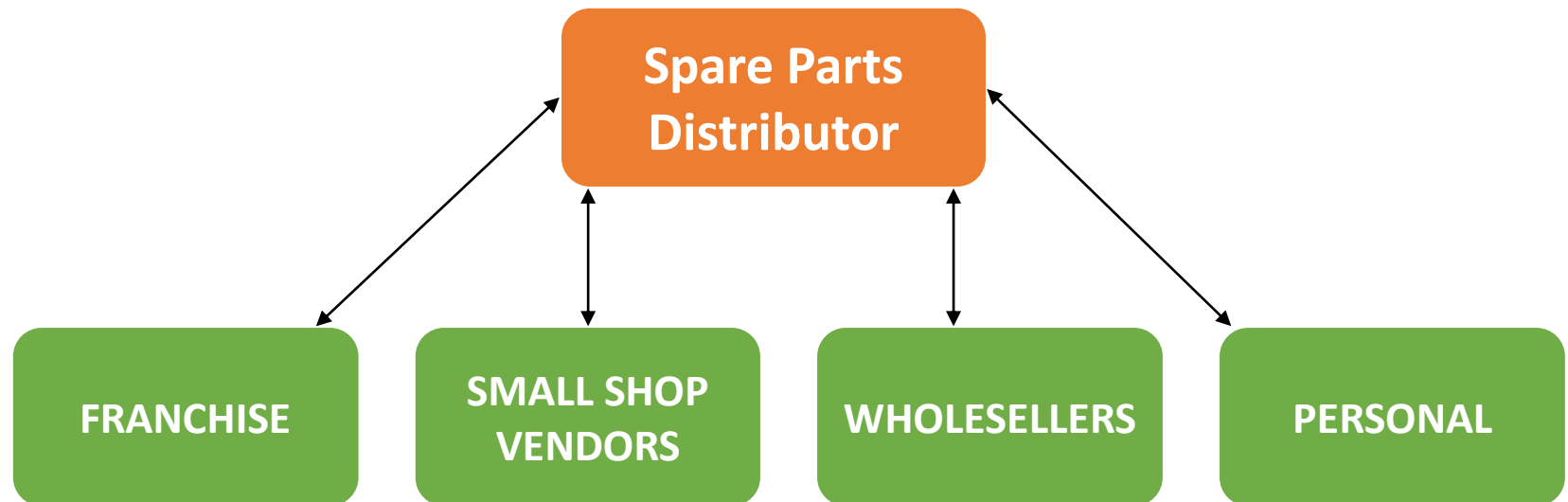
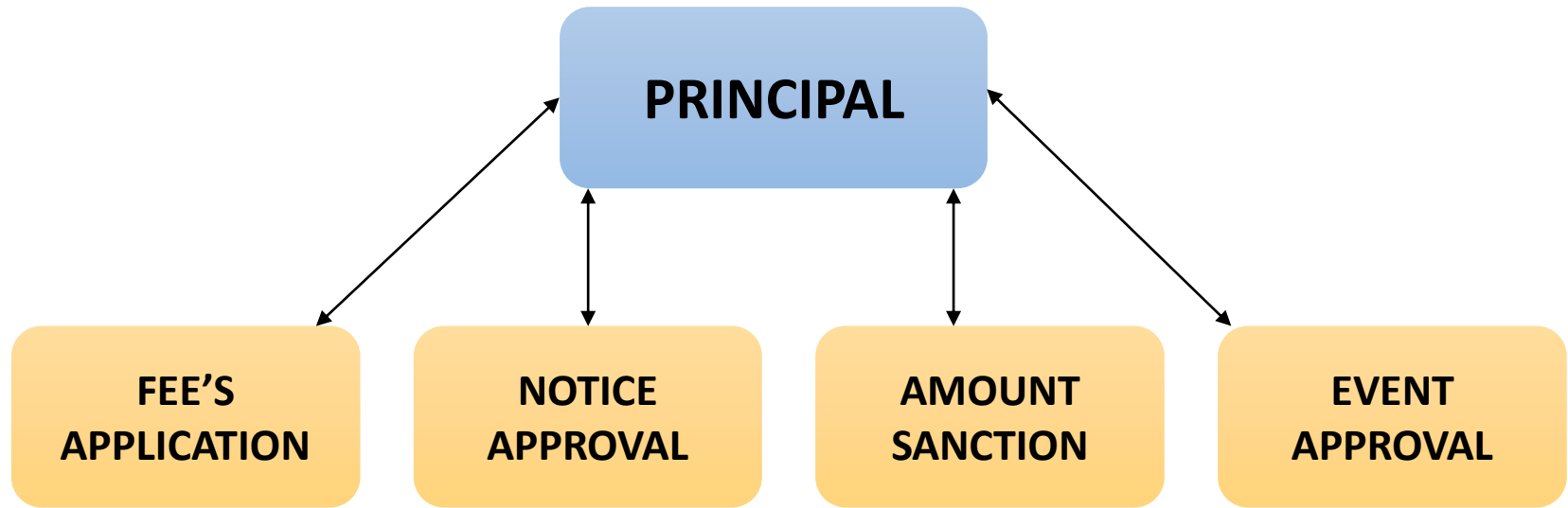
## Disadvantages

P2P networks often have very little security.

P2P networks often suffer from performance issues.

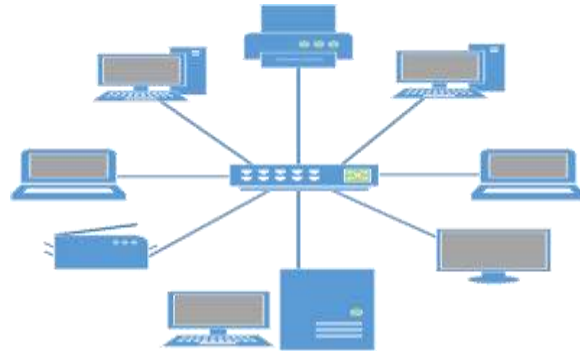
Some peer to peer networks may place illegal content on your device without your knowledge.

# CLIENT SERVER NETWORK ARCHITECHTURE





# CLIENT SERVER NETWORK ARCHITECTURE



Advantages	Disadvantages
<b>Centralization</b>	<b>Traffic Congestion</b>
<b>Security</b>	<b>Maintenance</b>
<b>Scalability</b>	<b>Cost</b>